

## PR Series RTD Probes with Connection Heads

### Platinum RTD Probes

PR-11 .....	.Consult Sales
PR-12 .....	.Consult Sales
PR-14 .....	.Consult Sales
PR-18 .....	.Consult Sales
PR-19 .....	.Consult Sales

## Bayonet and Compression Fitting RTD's

	Price
<b>BT Series</b>	
BT-000-RTD-2 1/4-60-1/C .....	\$ 189.00
BT-000-RTD-2 1/4-60-2/C .....	\$ 197.00
BT-000-RTD-3 1/2-60-1/C .....	\$ 189.00
BT-000-RTD-3 1/2-60-2/C .....	\$ 202.00
BT-090-RTD-2 1/4-60-1/C .....	\$ 191.00
BT-090-RTD-2 1/4-60-2/C .....	\$ 197.00
BT-909-RTD-3 1/2-60-1/C .....	\$ 191.00
BT-090-RTD-3 1/2-60-2/C .....	\$ 197.00
<b>CF Series</b>	
CF-000-RTD-2-60-1/C .....	\$ 179.00
CF-000-RTD-2-60-2/C .....	\$ 186.00
CF-000-RTD-4-60-1/C .....	\$ 179.00
CF-000-RTD-4-60-2/C .....	\$ 186.00
CF-090-RTD-2-60-1/C .....	\$ 192.00
CF-090-RTD-2-60-2/C .....	\$ 188.00
CF-090-RTD-4-60-1/C .....	\$ 192.00
CF-090-RTD-4-60-2/C .....	\$ 188.00

## 800 Series RTD's

**Precision RTD Probes**

RTD-805/C .....	<b>170.00</b>
RTD-830/C .....	<b>134.00</b>
RTD-850/C .....	<b>134.00</b>
RTD-860/C .....	<b>170.00</b>

### Surface Mount RTD's

#### SRTD

Surface Mount RTD Series

SRTD-1/C	.....	.\$	224.00
SRTD-2/C	.....	.\$	273.00
OB-101-1/2C	.....	.\$	25.00
OB-200-2/C	.....	.\$	40.00
SA1-RTS	.....	.\$	98.00
SA1-RTD-80	.....	.\$	110.00
SA1-RTD-120	.....	.\$	127.00

## C700JUA and C700KUA Thermocouples

These Thermocouples are designed for general applications.

They are encased in a thin stainless-steel sheath and can be used in mildly corrosive fluids.

Type	Old Model Number	Old CIC PN	Model	PCN	Price
J	C700JUA	0104-10000	TJ120-ICSS-18U-6-GG/C (C700JUA)	309980	\$ 73.00
K	C700KUA	0104-10008	TJ120-CASS-18U-6-GG/C (C700KUA)	309972	\$ 73.00
J	C700JU	0104-12119	TJ120-ICSS-18U-6-GG/C (C700JU)	293544	\$ 73.00
K	C700KU	0104-12120	TJ120-ICSS-18U-6-GG/C (C700KU)	293552	\$ 73.00

## XCIB High Temperature Overbraided Thermocouples

Probe Style 1 - 3 & 10 Foot Lengths

XCIB-(*)-1-1-3/C	.....	\$ 84.00
XCIB-(*)-1-1-10/C	.....	\$ 117.00
XCIB-(*)-1-2-3/C	.....	\$ 71.00
XCIB-(*)-1-2-10/C	.....	\$ 101.00
XCIB-(*)-1-3-3/C	.....	\$ 79.00
XCIB-(*)-1-3-10/C	.....	\$ 103.00
XCIB-(*)-1-4-3/C	.....	\$ 81.00
XCIB-(*)-1-4-10/C	.....	\$ 111.00

Probe Style 2 - 3 & 10 Foot Lengths

XCIB-(*)-2-1-3/C	.....	\$ 83.00
XCIB-(*)-2-1-10/C	.....	\$ 116.00
XCIB-(*)-2-2-3/C	.....	\$ 71.00
XCIB-(*)-2-2-10/C	.....	\$ 101.00
XCIB-(*)-2-3-3/C	.....	\$ 79.00
XCIB-(*)-2-3-10/C	.....	\$ 103.00
XCIB-(*)-2-4-3/C	.....	\$ 81.00
XCIB-(*)-2-4-10/C	.....	\$ 111.00

Probe Style 3 - 3 & 10 Foot Lengths

XCIB-(*)-3-1-3/C	.....	\$ 96.00
XCIB-(*)-3-1-10/C	.....	\$ 117.00
XCIB-(*)-3-2-3/C	.....	\$ 81.00
XCIB-(*)-3-2-10/C	.....	\$ 110.00
XCIB-(*)-3-3-3/C	.....	\$ 81.00
XCIB-(*)-3-3-10/C	.....	\$ 109.00
XCIB-(*)-3-4-3/C	.....	\$ 82.00
XCIB-(*)-3-4-10/C	.....	\$ 110.00

Probe Style 4 - 3 & 10 Foot Lengths

XCIB-(*)-4-1-3/C	.....	\$ 97.00
XCIB-(*)-4-1-10/C	.....	\$ 122.00
XCIB-(*)-4-2-3/C	.....	\$ 96.00
XCIB-(*)-4-2-10/C	.....	\$ 125.00
XCIB-(*)-4-3-3/C	.....	\$ 101.00
XCIB-(*)-4-3-10/C	.....	\$ 125.00
XCIB-(*)-4-4-3/C	.....	\$ 96.00
XCIB-(*)-4-4-10/C	.....	\$ 121.00

Probe Style 5 - 3 & 10 Foot Lengths

XCIB-(*)-5-1-3/C	.....	\$ 103.00
XCIB-(*)-5-1-10/C	.....	\$ 129.00
XCIB-(*)-5-2-3/C	.....	\$ 103.00
XCIB-(*)-5-2-10/C	.....	\$ 129.00
XCIB-(*)-5-3-3/C	.....	\$ 111.00
XCIB-(*)-5-3-10/C	.....	\$ 134.00
XCIB-(*)-5-4-3/C	.....	\$ 101.00
XCIB-(*)-5-4-10/C	.....	\$ 125.00

## 5TC Series Thermocouples

Package of 5 Thermocouples

5TC-GG-(*)-20-36/C	..... \$	80.00
5TC-GG-(*)-20-72/C	..... \$	100.00
5TC-GG-(*)-24-36/C	..... \$	68.00
5TC-GG-(*)-24-72/C	..... \$	90.00
5TC-GG-(*)-30-36/C	..... \$	68.00
5TC-GG-(*)-30-72/C	..... \$	90.00
5TC-TT-(*)-20-36/C	..... \$	94.00
5TC-TT-(*)-20-72/C	..... \$	129.00
5TC-TT-(*)-24-36/C	..... \$	79.00
5TC-TT-(*)-24-72/C	..... \$	93.00
5TC-TT-(*)-30-36/C	..... \$	96.00
5TC-TT-(*)-30-72/C	..... \$	119.00
5TC-TT-(*)-36-36/C	..... \$	94.00
5TC-TT-(*)-36-72/C	..... \$	129.00

## 5SC Series Thermocouples

Package of 5 Thermocouples with Male Connector

5SC-TT-(*)-36-36/C	.....	\$ 154.00
5SC-TT-(*)-36-72/C	.....	\$ 189.00
5SC-TT-(*)-30-36/C	.....	\$ 148.00
5SC-TT-(*)-30-72/C	.....	\$ 184.00
5SC-GG-(*)-30-36/C	.....	\$ 111.00
5SC-GG-(*)-30-72/C	.....	\$ 148.00

*\*Specify Calibration - J, K, T or E*

## SA1 Series Thermocouples

Package of 5 Self-Adhesive Thermocouples

SA1-J/C	.....	\$ 117.00
SA1-K/C	.....	\$ 117.00
SA1-E/C	.....	\$ 117.00
SA1-T/C	.....	\$ 117.00

## 88000 Series Unique Surface Probes

Unique Surface Probes	
88003K/C	.....\$ 229.00
88006K/C	.....\$ 219.00
88101K/C	.....\$ 219.00

## Heat Trace/Pipe Sensor

Model	Sensor	Insulation	Common Junction	Temperature Range, °F (°C)		Base Price
				Min	Max	
RBF185M-	RTD	Fiberglass		-100 (-73)	900 (482)	100.00
J48U-HT	Type J	MGO	Ungrounded	32 (0)	900 (482)	67.00
K48U-HT	Type K	MGO	Ungrounded	900 (482)	1800 (982)	67.00
T48U-HT	Type T	MGO	Ungrounded	-300 (-184)	500 (260)	67.00
E48U-HT	Type E	MGO	Ungrounded	32 (0)	1800 (982)	67.00

Code	Sheath Lengths	
	Hot Leg	Cold Leg
304	3"	4"
306	3"	6"
308	3"	8"

Code	Mounting Pad
18RD	Fits all pipe sizes*

Code	Connection Heads	Adder
31SB/C	Aluminum - NEMA 4	67.00
49SB/C	Flip top Aluminum Head - NEMA 4	67.00
71SB/C	Cast Iron/Aluminum - NEMA 4 - Explosion Resistant - Class I, Division 2	115.00
73SB/C	Cast Aluminum - ATEX	145.00 NEW
81SB/C	316L Stainless Steel - NEMA 4X - Explosion Resistant	250.00
83SB/C	316L Stainless Steel - ATEX	330.00 NEW
91SB/C	316L Stainless Steel - NEMA 4X	250.00

J48U-HT    304    18RD    31SB/C    Typical Model Number    (J48U-HT-030418RD31SB/C)

\*Mounting Pad conforms to the pipe once pipe clamps are tightened.

**In Stock**

Part Number	PCN	Price
RBF185M-HT-304-18RD-31SB/C	317315	167.00
RBF185M-HT-304-18RD-71SB/C	317340	215.00

## 260 Series Thermowells

DESCRIPTION	304SS	316SS	CS	BRASS
<b>Series 260S</b>				
Standard Thermowell for General Use				
1/2-260S-U2 1/2-(*)/C .....	\$ 56.00	\$ 75.00	\$ 47.00	\$ 47.00
1/2-260S-U4 1/2-(*)/C .....	\$ 68.00	\$ 86.00	\$ 54.00	\$ 54.00
1/2-260S-U7 1/2-(*)/C .....	\$ 94.00	\$ 120.00	\$ 78.00	\$ 78.00
1/2-260S-U10 1/2-(*)/C .....	\$ 110.00	\$ 141.00	\$ 96.00	\$ 96.00
1/2-260S-U13 1/2-(*)/C .....	\$ 155.00	\$ 205.00	\$ 125.00	\$ 125.00
1/2-260S-U16 1/2-(*)/C .....	\$ 190.00	\$ 235.00	\$ 145.00	\$ 145.00
1/2-260S-U22 1/2-(*)/C .....	\$ 230.00	\$ 300.00	\$ 160.00	\$ 160.00
3/4-260S-U2 1/2-(*)/C .....	\$ 56.00	\$ 75.00	\$ 47.00	\$ 47.00
3/4-260S-U4 1/2-(*)/C .....	\$ 64.00	\$ 87.00	\$ 54.00	\$ 54.00
3/4-260S-U7 1/2-(*)/C .....	\$ 94.00	\$ 121.00	\$ 78.00	\$ 78.00
3/4-260S-U10 1/2-(*)/C .....	\$ 110.00	\$ 141.00	\$ 96.00	\$ 96.00
3/4-260S-U13 1/2-(*)/C .....	\$ 155.00	\$ 205.00	\$ 125.00	\$ 125.00
3/4-260S-U16 1/2-(*)/C .....	\$ 190.00	\$ 240.00	\$ 145.00	\$ 145.00
3/4-260S-U22 1/2-(*)/C .....	\$ 230.00	\$ 300.00	\$ 160.00	\$ 160.00
* Insert desired material - 304SS, 316SS (Standard), CS (Carbon Steel) or Brass				
<b>Series 260L</b>				
Lagging Extension Type Thermowell				
1/2-260L-U2 1/2-(*)/C .....	\$ 70.00	\$ 100.00	\$ 56.00	\$ 56.00
1/2-260L-U4 1/2-(*)/C .....	\$ 102.00	\$ 135.00	\$ 86.00	\$ 86.00
1/2-260L-U7 1/2-(*)/C .....	\$ 119.00	\$ 160.00	\$ 102.00	\$ 102.00
1/2-260L-U10 1/2-(*)/C .....	\$ 164.00	\$ 225.00	\$ 130.00	\$ 130.00
1/2-260L-U13 1/2-(*)/C .....	\$ 200.00	\$ 260.00	\$ 155.00	\$ 154.00
1/2-260L-U19 1/2-(*)/C .....	\$ 250.00	\$ 325.00	\$ 190.00	\$ 179.00
3/4-260L-U2 1/2-(*)/C .....	\$ 75.00	\$ 95.00	\$ 65.00	\$ 56.00
3/4-260L-U4 1/2-(*)/C .....	\$ 110.00	\$ 135.00	\$ 90.00	\$ 86.00
3/4-260L-U7 1/2-(*)/C .....	\$ 125.00	\$ 155.00	\$ 110.00	\$ 105.00
3/4-260L-U10 1/2-(*)/C .....	\$ 165.00	\$ 220.00	\$ 135.00	\$ 130.00
3/4-260L-U13 1/2-(*)/C .....	\$ 205.00	\$ 260.00	\$ 155.00	\$ 154.00
3/4-260L-U19 1/2-(*)/C .....	\$ 250.00	\$ 330.00	\$ 190.00	\$ 179.00
* Insert desired material - 304SS, 316SS (Standard), CS (Carbon Steel) or Brass				

## Standard Thermocouple and RTD Connectors

NHX-K-M/C	\$ 18.00
NHX-K-F/C	\$ 20.00
NHX-T-M/C	\$ 18.00
NHX-T-F/C	\$ 20.00
NHX-J-M/C	\$ 18.00
NHX-J-F/C	\$ 20.00
NHX-E-M/C	\$ 18.00
NHX-E-F/C	\$ 20.00
NHX-R-M/C	\$ 18.00
NHX-R-F/C	\$ 20.00
NHX-S-M/C	\$ 18.00
NHX-S-F/C	\$ 20.00
NHX-U-M/C	\$ 18.00
NHX-U-F/C	\$ 20.00
NHX-N-M/C	\$ 18.00
NHX-N-F/C	\$ 20.00
OSTW-K-M/C	\$ 12.00
OSTW-K-F/C	\$ 15.00
OSTW-T-M/C	\$ 12.00
OSTW-T-F/C	\$ 15.00
OSTW-J-M/C	\$ 12.00
OSTW-J-F/C	\$ 15.00
OSTW-E-M/C	\$ 12.00
OSTW-E-F/C	\$ 15.00
OSTW-R-M/C	\$ 12.00
OSTW-R-F/C	\$ 15.00
OSTW-S-M/C	\$ 12.00
OSTW-S-F/C	\$ 15.00
OSTW-U-M/C	\$ 12.00
OSTW-U-F/C	\$ 15.00
OSTW-T-M/C	\$ 12.00
OSTW-T-F/C	\$ 15.00
OTP-K-M/C	\$ 15.00
OTP-K-F/C	\$ 17.00
OTP-T-M/C	\$ 15.00
OTP-T-F/C	\$ 17.00
OTP-J-M/C	\$ 15.00
OTP-J-F/C	\$ 17.00
OTP-E-M/C	\$ 15.00
OTP-E-F/C	\$ 17.00

\*Specify Thermocouple type K, T, J, E, R, S, U

## Subminiature Thermocouple and RTD Connectors

SHX-K-M/C	.....	\$ 16.00
SHX-K-F/C	.....	\$ 19.00
SHX-T-M/C	.....	\$ 16.00
SHX-T-F/C	.....	\$ 19.00
SHX-J-M/C	.....	\$ 16.00
SHX-J-F/C	.....	\$ 19.00
SHX-E-M/C	.....	\$ 16.00
SHX-E-F/C	.....	\$ 19.00
SHX-R-M/C	.....	\$ 16.00
SHX-R-F/C	.....	\$ 19.00
SHX-S-M/C	.....	\$ 16.00
SHX-S-F/C	.....	\$ 19.00
SHX-U-M/C	.....	\$ 16.00
SHX-U-F/C	.....	\$ 19.00
SMPW-K-M/C	.....	\$ 12.00
SMPW-K-F/C	.....	\$ 12.00
SMPW-T-M/C	.....	\$ 12.00
SMPW-T-F/C	.....	\$ 12.00
SMPW-J-M/C	.....	\$ 12.00
SMPW-J-F/C	.....	\$ 12.00
SMPW-E-M/C	.....	\$ 12.00
SMPW-E-F/C	.....	\$ 12.00
SMPW-R-M/C	.....	\$ 12.00
SMPW-R-F/C	.....	\$ 12.00
SMPW-S-M/C	.....	\$ 12.00
SMPW-S-F/C	.....	\$ 12.00
SMPW-U-M/C	.....	\$ 12.00
SMPW-U-F/C	.....	\$ 12.00
MTP-K-M/C	.....	\$ 14.00
MTP-K-F/C	.....	\$ 14.00
MTP-T-M/C	.....	\$ 14.00
MTP-T-F/C	.....	\$ 14.00
MTP-J-M/C	.....	\$ 14.00
MTP-J-F/C	.....	\$ 14.00
MTP-E-M/C	.....	\$ 14.00
MTP-E-F/C	.....	\$ 14.00
MTP-R-M/C	.....	\$ 13.00
MTP-R-F/C	.....	\$ 13.00
MTP-U-M/C	.....	\$ 13.00
MTP-U-F/C	.....	\$ 13.00
MTP-N-M/C	.....	\$ 15.00
MTP-N-F/C	.....	\$ 17.00
MPJ-K-F/C	.....	\$ 13.00
MPJ-T-F/C	.....	\$ 13.00
MPJ-J-F/C	.....	\$ 13.00
MPJ-E-F/C	.....	\$ 13.00
MPJ-R-F/C	.....	\$ 13.00
MPJ-S-F/C	.....	\$ 13.00
MPJ-U-F/C	.....	\$ 13.00

### MGO Thermocouples

Code	Thermocouple Alloy	Min Temp F.	Max Temp F.
J	Iron/Constantan	32	700
K	Chromel/Alumel	32	1600
T	Copper/Constantan	-328	400
E	Chromel/Constantan	32	800

CODE	Number of Elements
S	One (Single)
D	Two (Dual)

CODE	Sheath Diameter
A	1/16"
B	1/8"
C	3/16"
E	1/4"
F	3/8"

CODE	Sheath Material	Thermocouple Type
2	304 Stainless Steel = General Purpose, Good Corrosion Resistance	J,K,T,E
3	316 Stainless Steel = Superior corrosion resistance	J,K,T,E
4	Inconel 600 = Excellent Corrosion Resistance at High Temperatures	J,K

CODE	Junction
G	Grounded
U	Ungrounded
E	Exposed (Not available on 1/16" Diameter Sheath)

CODE	PROBE LENGTH (On bent T/Cs PROBE LENGTH = Hot Leg + Cold Leg)
XXX	XXX = Probe Length in inches

CODE	Fraction of an Inch Probe Lengths
A	None
B	1/4"
C	1/2"
E	3/4"

CODE	Sheath Bend Angle and Length
000	None
2XX	45° Sheath Bend, XX = length in inches from Probe Tip to start of bend (hot leg).
3XX	90° Sheath Bend, XX = length in inches from Probe Tip to start of bend (hot leg).

CODE	Junction Fitting
J1	None (Epoxy Seal)
J3	1/2" x 1/2" NPT 316 Stainless Steel Hex Nipple (For Connection Head or Replacement Probe)
J4	Spring Loaded 1/2" x 1/2" NPT 316 Stainless Steel Hex Nipple (Connection Head Use Only!)
J5	Stainless Steel Transition Joint (400°F Max) with spring style strain relief
J6	Stainless Steel Transition Joint with High Temp. Potting (1000°F) with spring style strain relief
J7	Stainless Steel Transition fitting without strain relief
J8	Stainless Steel Transition fitting same diameter as sheath. (Not available on 1/16" Diameter Sheath)
JC	1/2" NPT Fixed Bushing 316 Stainless Steel

CODE	Lead-Wire Type & Connection Head Options –	Thermocouple Types
NA	None	J,K,T,E
F1	Fiberglass insulation - solid conductor	J,K,T
F2	Fiberglass insulation - solid conductor - flexible armor	J,K,T
F3	Fiberglass insulation - solid conductor - stainless steel overbraid	J,K
F4	Fiberglass insulation - Stranded conductor	J,K
F5	Fiberglass insulation - Stranded conductor - flexible armor	J,K
F6	Fiberglass insulation - Stranded conductor - stainless steel overbraid	J
T1	Teflon insulation - solid conductor	J,K,T
T2	Teflon insulation - solid conductor - flexible armor	J,K,T
T3	Teflon insulation - Stranded conductor	J,K
T4	Teflon insulation - Stranded conductor - flexible armor	J,K
H1	Cast Aluminum Connection Head with Terminal Block	J,K,T,E
H2	Flip Top Aluminum Connection Head with Terminal Block	J,K,T,E
H4	Explosion Proof-316L SS Connection Head with Terminal Block	J,K,T,E
H5	316L Stainless Steel Connection Head with Terminal Block	J,K,T,E
H7	Cast Iron Connection Head with Terminal Block	J,K,T,E
H8	Explosion Proof-Cast Iron/Alum Connection Head with Terminal Block	J,K,T,E

										<b>CODE</b>		<b>Lead Length "F" Dimension</b>	
										XXX	XXX = Lead Length in inches		
											<b>CODE</b>	<b>Termination Options</b>	<b>Thermocouple Types</b>
											01	None	J,K,T,E
											02	Leads stripped 2"	J,K,T,E
											03	Leads stripped 2" with spade lugs	J,K,T,E
											04	Leads stripped 2" with 1/2" NPT Bx connector	J,K,T,E
											05	Leads stripped 2" with spade lugs & 1/2" NPT Bx connector	J,K,T,E
											06	Standard thermocouple plug*	J,K,T
											07	Standard thermocouple jack*	J,K,T
											08	Standard thermocouple plug with mating connector*	J,K,T
											09	Standard thermocouple jack with mating connector*	J,K,T
											10	Miniature thermocouple plug*	J,K
											11	Miniature thermocouple jack*	J,K
											12	Miniature thermocouple plug with mating connector*	J,K
											13	Miniature thermocouple jack with mating connector*	J,K
												* Plugs and Jacks 500°F maximum temperature, single element thermocouples only	
												Thermowells for 1/4" diameter Probes (4" to 26" length), Connection Head H8 only	
											18	Matching Built-Up Protection Wells, External 1/2" NPT and Internal 1/2" NPT, 316SS, .260 Bore	
J	S	E	2	U-	012	A	000-	J5	T3	036	02		

### MGO Filled Thermocouples

Typical PN: JSE2U-012A000-J5T3036-02

Pricing		Code	Adder
Step 1	Junction type	U	\$4.00

Junction Type		
Code	Single	Dual
G	N/C	N/C
U	\$4.00	\$6.60
E	\$2.80	\$5.50

		Code	Adder
Step 2	Probe length	012	\$20.15

Probe length in inches	
Code	
XXX	12" Base Price + Adder for each additional 6" from table

Examples:  
 JSE2 12" probe = \$20.15  
 JSE2 18" probe = \$20.15 + (1 x \$5.10) = \$25.25  
 JSE2 24" probe = \$20.15 + (2 x \$5.10) = \$30.35

		Code	Adder
Step 3	Fractional length	A	\$0.00

Fractional Probe length	
Code	
A	\$0.00
B	\$0.00
C	\$0.00
D	\$0.00

		Code	Adder
Step 4	Sheath bend	000	\$0.00

Sheath Bends	
Code	
000	\$0.00
2XX	\$2.80
3XX	\$2.80

		Code	Adder
Step 5	Junction Fitting	J5	\$12.65

Junction Fitting		
Code	Single	Dual
J1	\$0.00	\$0.00
J3	\$28.65	\$28.65
J4	\$30.65	\$30.65
J5	\$12.65	\$17.80
J6	\$12.65	\$17.80
J7	\$11.25	\$16.40
J8	\$27.35	NA
JC	\$23.75	\$23.75

		Code	Adder
Step 6	Lead wire	T3	\$0.00

Lead-Wire & Connection Head Options		
Code	Single	Dual
NA	\$0.00	\$0.00
F1	\$0.00	\$0.00
F2	\$0.00	\$0.00
F3	\$0.00	\$0.00
F4	\$0.00	\$0.00
F5	\$0.00	\$0.00
F6	\$0.00	\$0.00
T1	\$0.00	\$0.00
T2	\$0.00	\$0.00
T3	\$0.00	\$0.00
T4	\$0.00	\$0.00
H1	\$36.90	\$42.30
H2	\$43.55	\$54.05
H4	\$166.35	\$171.20
H5	\$110.95	\$117.05
H7	\$48.30	\$53.05
H8	\$91.65	\$100.15

		Code	Adder
Step 7	Lead Length	036	\$4.20

Lead length in inches	
Code	Code for H1-H8 (no adder)
000	Lead wire adder per foot
XXX	from table, round up to even foot length

Examples:  
 36" of T3 lead wire = 3 x \$1.40 = \$4.20

		Code	Adder
Step 8	Terminations	02	\$2.80

Termination Options		
Code	Single	Dual
01	\$0.00	\$0.00
02	\$2.80	\$4.90
03	\$3.20	\$6.60
04	\$5.50	\$8.00
05	\$5.95	\$9.50
06	\$11.90	NA
07	\$11.90	NA
08	\$19.25	NA
09	\$19.25	NA
10	\$11.25	NA
11	\$11.75	NA
12	\$17.90	NA
13	\$17.90	NA

Thermowells		
Code	4"-14"	14"-26"
18	\$143.60	\$186.00

Single Element		
Code	12" Base	6" adder
JSA2	\$15.55	\$1.40
JSA3	\$15.70	\$1.55
JSA4	\$16.30	\$1.90
JSB2	\$11.55	\$2.00
JSB3	\$11.90	\$2.30
JSB4	\$14.00	\$2.80
JSC2	\$14.45	\$3.20
JSC3	\$14.80	\$3.55
JSC4	\$19.05	\$4.35
JSE2	\$20.15	\$5.10
JSE3	\$32.70	\$5.60
JSE4	\$33.10	\$6.70
JSF2	\$33.10	\$10.30
JSF3	\$34.05	\$11.00
JSF4	\$52.20	\$12.50
KSA2	\$15.45	\$1.40
KSA3	\$15.70	\$1.55
KSA4	\$16.30	\$1.90
KSB2	\$11.55	\$2.00
KSB3	\$11.90	\$2.30
KSB4	\$14.00	\$2.80
KSC2	\$14.45	\$3.20
KSC3	\$14.80	\$3.55
KSC4	\$19.05	\$4.35
KSE2	\$20.15	\$5.10
KSE3	\$32.70	\$5.60
KSE4	\$21.65	\$6.70
KSF2	\$33.10	\$10.30
KSF3	\$34.05	\$11.00
KSF4	\$52.20	\$12.50
TSA2	\$18.15	\$1.55
TSA3	\$19.05	\$1.70
TSB2	\$12.85	\$2.70
TSB3	\$13.60	\$2.80
TSC2	\$16.75	\$3.55
TSC3	\$18.00	\$3.70
TSE2	\$23.50	\$5.75
TSE3	\$24.90	\$6.40
TSF2	\$38.20	\$11.25
TSF3	\$40.45	\$11.90
ESA2	\$16.75	\$1.55
ESA3	\$19.25	\$1.70
ESB2	\$13.50	\$2.30
ESB3	\$14.35	\$2.50
ESC2	\$16.75	\$3.55
ESC3	\$18.00	\$3.80
ESE2	\$21.80	\$6.05
ESE3	\$22.90	\$6.40
ESF2	\$32.70	\$9.95
ESF3	\$34.65	\$10.65

Dual Element		
Code	12" Base	6" adder
JDA2	\$22.40	\$2.20
JDA3	\$22.70	\$2.50
JDA4	\$23.75	\$2.70
JDB2	\$14.45	\$2.80
JDB3	\$14.90	\$3.55
JDB4	\$18.00	\$3.80
JDC2	\$18.25	\$4.10
JDC3	\$18.45	\$5.25
JDC4	\$23.75	\$5.50
JDE2	\$24.90	\$6.20
JDE3	\$25.45	\$7.90
JDE4	\$39.05	\$8.20
JDF2	\$38.00	\$11.65
JDF3	\$38.85	\$13.70
JDF4	\$58.35	\$14.45
KDA2	\$22.40	\$2.20
KDA3	\$22.70	\$2.50
KDA4	\$23.75	\$2.70
KDB2	\$14.45	\$2.80
KDB3	\$14.90	\$3.55
KDB4	\$18.00	\$3.80
KDC2	\$18.25	\$4.10
KDC3	\$18.45	\$5.25
KDC4	\$23.75	\$5.50
KDE2	\$24.90	\$6.20
KDE3	\$25.45	\$7.90
KDE4	\$39.05	\$8.20
KDF2	\$38.00	\$11.65
KDF3	\$38.85	\$13.70
KDF4	\$58.35	\$14.45
TDA2	\$25.05	\$2.30
TDA3	\$26.50	\$2.40
TDB2	\$18.00	\$3.80
TDB3	\$19.15	\$4.00
TDC2	\$18.85	\$4.35
TDC3	\$20.05	\$4.45
TDE2	\$25.75	\$6.70
TDE3	\$27.55	\$6.95
TDF2	\$42.40	\$13.30
TDF3	\$44.50	\$14.00
EDA2	\$23.75	\$2.70
EDA3	\$26.40	\$2.80
EDB2	\$15.80	\$2.95
EDB3	\$16.75	\$3.20
EDC2	\$19.05	\$4.10
EDC3	\$20.15	\$4.35
EDE2	\$26.15	\$6.70
EDE3	\$27.85	\$7.10
EDF2	\$38.20	\$11.25
EDF3	\$40.15	\$11.90

Lead-Wire Adder Per Foot						
Code	Type J		Type K		Type T	
	Single	Dual	Single	Dual	Single	Dual
NA	\$0.00	\$0.00	\$0.00	\$0.00	\$0.00	\$0.00
F1	\$1.20	\$1.90	\$1.40	\$2.10	\$1.20	\$1.90
F2	\$2.95	\$3.70	\$3.30	\$3.70	\$2.70	\$3.40
F3	\$1.90	\$2.70	\$2.30	\$2.70	NA	NA
F4	\$1.30	\$2.00	\$1.40	\$2.80	NA	NA
F5	\$3.20	\$3.70	\$3.70	\$4.35	NA	NA
F6	\$1.90	\$3.05	\$2.40	\$2.80	NA	NA
T1	\$1.30	\$2.00	\$1.40	\$2.30	\$1.30	\$2.40
T2	\$2.95	\$3.55	\$3.05	\$3.90	\$2.50	\$4.00
T3	\$1.40	\$2.30	\$2.00	\$2.50	NA	NA
T4	\$3.20	\$3.90	\$3.70	\$4.10	NA	NA

	Total
JSE2U-012A000-J5T303602	\$43.80

### Plastics Industry Thermocouples

Thermocouple Alloy		Min Temp F.	Max Temp F.
JP	Iron/Constantan	32	700
KP	Chromel/Alumel	32	1600
TP	Copper/Constantan	-328	400

CODE	Number of Elements
S	One (Single)
D	Two (Dual)

CODE	Sheath Diameter
B	1/8" (Not Available in Dual Elements)
C	3/16"
E	1/4"

CODE	Sheath Material
2	304 Stainless Steel = General purpose, good corrosion resistance
3	316 Stainless Steel = Superior corrosion resistance

CODE	Junction	Note: Round Tip Standard
G	Grounded	
U	Ungrounded	

CODE	PROBE LENGTH (Max. Length 120") (On bent T/Cs PROBE LENGTH = Hot Leg + Cold Leg)
XXX	XXX = Probe Length in inches

CODE	Fraction of an inch Probe Lengths
A	None
B	1/4"
C	1/2"
E	3/4"

CODE	Sheath Bend Angle and Length
000	None
2XX	45° Sheath Bend, XX = length in inches from Probe Tip to start of bend (hot leg).
3XX	90° Sheath Bend, XX = length in inches from Probe Tip to start of bend (hot leg).

CODE	Junction Fitting
J2	Crimped
J9	7/16" ID Single slot spring loaded bayonet fitting (3/16" Diameter Sheath Only)

CODE	Lead-Wire Type	Thermocouple Types
NA	None	J,K,T
F1	Fiberglass insulation - solid conductor	J,K,T
F2	Fiberglass insulation - solid conductor - flexible armor	J,K,T
F3	Fiberglass insulation - solid conductor - stainless steel overbraid	J,K
F4	Fiberglass insulation - Stranded conductor	J,K
F5	Fiberglass insulation - Stranded conductor - flexible armor	J,K
F6	Fiberglass insulation - Stranded conductor - stainless steel overbraid	J
T1	Teflon insulation - solid conductor	J,K,T
T2	Teflon insulation - solid conductor - flexible armor	J,K,T
T3	Teflon insulation - Stranded conductor	J,K
T4	Teflon insulation - Stranded conductor - flexible armor	J,K

CODE	Lead Length "F" Dimension
XXX	XXX = Lead Length in inches

CODE	Termination Options	Thermocouple Types
01	None	J,K,T
02	Leads stripped 2"	J,K,T
03	Leads stripped 2" with spade lugs	J,K,T
04	Leads stripped 2" with 1/2" NPT Bx connector	J,K,T
05	Leads stripped 2" with spade lugs & 1/2" NPT Bx connector	J,K,T
06	Standard thermocouple plug*	J,K,T
07	Standard thermocouple jack*	J,K,T
08	Standard thermocouple plug with mating connector*	J,K,T
09	Standard thermocouple jack with mating connector*	J,K,T
10	Miniature thermocouple plug*	J,K
11	Miniature thermocouple jack*	J,K
12	Miniature thermocouple plug with mating connector*	J,K
13	Miniature thermocouple jack with mating connector*	J,K

\* Plugs and Jacks 500°F maximum temperature, single element thermocouples only

JP	S	C	3	U-	012	A	000-	J9	T3	036	02
----	---	---	---	----	-----	---	------	----	----	-----	----

### Plastics Industry Thermocouple

Typical PN: JPSC3U-012A000-J9T3036-02

Pricing	Code	Adder
Step 1 Junction type	U	\$0.00

Junction Type		
Code	Single	Dual
G	\$0.00	\$0.00
U	\$0.00	\$0.00

Step 2	Probe length	Code	Adder
		012	\$11.25

Probe length in inches	
Code	
XXX	12" Base Price + Adder for each additional 6" from table

Examples:  
 JPSC3 12" probe = \$11.25  
 JPSC3 18" probe = \$11.25 + (1 x \$2.95) = \$14.20  
 JPSC3 24" probe = \$11.25 + (2 x \$2.95) = \$17.15

Step 3	Fractional length	Code	Adder
		A	\$0.00

Fractional Probe length	
Code	
A	\$0.00
B	\$0.00
C	\$0.00
D	\$0.00

Step 4	Sheath bend	Code	Adder
		000	\$0.00

Sheath Bends		
Code	Single	Dual
000	\$0.00	\$0.00
2XX	\$3.55	\$3.55
3XX	\$3.55	\$3.55

Step 5	Junction Fitting	Code	Adder
		J9	\$6.70

Junction Fitting		
Code	Single	Dual
J2	\$0.00	\$0.00
J9	\$6.70	\$6.70

Step 6	Lead wire	Code	Adder
		T3	\$0.00

Lead-Wire & Connection Head Options		
Code	Single	Dual
NA	\$0.00	\$0.00
F1	\$0.00	\$0.00
F2	\$0.00	\$0.00
F3	\$0.00	\$0.00
F4	\$0.00	\$0.00
F5	\$0.00	\$0.00
F6	\$0.00	\$0.00
T1	\$0.00	\$0.00
T2	\$0.00	\$0.00
T3	\$0.00	\$0.00
T4	\$0.00	\$0.00

Step 7	Lead Length	Code	Adder
		036	\$4.20

Lead length in inches	
Code	Code for H1-H8 (no adder)
000	Lead wire adder per foot from table, round up to even foot length
XXX	

Examples:  
 36" of T3 lead wire = 3 x \$1.40 = \$4.20

Step 8	Terminations	Code	Adder
		02	\$2.80

Termination Options		
Code	Single	Dual
01	\$0.00	\$0.00
02	\$2.80	\$4.90
03	\$3.20	\$6.60
04	\$5.50	\$8.00
05	\$5.95	\$9.50
06	\$11.90	NA
07	\$11.90	NA
08	\$19.25	NA
09	\$19.25	NA
10	\$11.25	NA
11	\$11.75	NA
12	\$17.90	NA
13	\$17.90	NA

Single Element		
Code	12" Base	6" adder
JPSB2	\$11.25	\$2.80
JPSB3	\$11.25	\$2.95
JPSC2	\$10.65	\$2.80
JPSC3	\$11.25	\$2.95
JPSE2	\$10.65	\$2.80
JPSE3	\$11.25	\$2.95
KPSB2	\$11.90	\$2.80
KPSB3	\$11.90	\$2.95
KPSC2	\$10.65	\$2.80
KPSC3	\$11.25	\$2.95
KPSE2	\$10.65	\$2.80
KPSE3	\$11.25	\$2.95
TPSB2	\$11.25	\$2.80
TPSB3	\$11.25	\$2.95
TPSC2	\$10.65	\$2.80
TPSC3	\$11.25	\$2.95
TPSE2	\$10.65	\$2.80
TPSE3	\$11.25	\$2.95

Dual Element		
Code	12" Base	6" adder
JPDB2	N/A	N/A
JPDB3	N/A	N/A
JPDC2	\$15.35	\$3.55
JPDC3	\$15.35	\$3.70
JPDE2	\$15.35	\$3.55
JPDE3	\$15.35	\$3.70
KPDB2	N/A	N/A
KPDB3	N/A	N/A
KPDC2	\$15.35	\$3.55
KPDC3	\$15.45	\$3.70
KPDE2	\$16.20	\$3.55
KPDE3	\$15.45	\$3.70
TPDB2	N/A	N/A
TPDB3	N/A	N/A
TPDC2	\$15.35	\$3.55
TPDC3	\$15.35	\$3.70
TPDE2	\$15.35	\$0.30
TPDE3	\$15.35	\$3.70

Lead-Wire Adder Per Foot						
Code	Type J		Type K		Type T	
	Single	Dual	Single	Dual	Single	Dual
NA	\$0.00	\$0.00	\$0.00	\$0.00	\$0.00	\$0.00
F1	\$1.20	\$1.90	\$1.40	\$2.10	\$1.20	\$1.90
F2	\$2.95	\$3.70	\$3.30	\$3.70	\$2.70	\$3.40
F3	\$1.90	\$2.70	\$2.30	\$2.70	NA	NA
F4	\$1.30	\$2.00	\$1.40	\$2.80	NA	NA
F5	\$3.20	\$3.70	\$3.70	\$4.35	NA	NA
F6	\$1.90	\$3.05	\$2.40	\$2.80	NA	NA
T1	\$1.30	\$2.00	\$1.40	\$2.30	\$1.30	\$2.40
T2	\$2.95	\$3.55	\$3.05	\$3.90	\$2.50	\$4.00
T3	\$1.40	\$2.30	\$2.00	\$2.50	NA	NA
T4	\$3.20	\$3.90	\$3.70	\$4.10	NA	NA

Total
JPSC3U-012A000-J9T303602 <u>\$24.95</u>

## Adjustable Depth Sensors

ADS <b>ADJUSTABLE DEPTH SENSOR</b>						
CODE	Adjustment Type					
S	Spring (Applicable Lead wire type codes: F3, F4, F6, T3)					
C	Conduit (Applicable Lead wire type codes: F2, F5, T2, T4)					
CODE	Thermocouple Alloy	Min Temp F.	Max Temp F.			
J	Iron/Constantan	32	700			
K	Chromel/Alumel	32	1600			
T	Copper/Constantan	-328	400			
CODE	Lead Wire Type	Thermocouple Types				
F2	Fiberglass insulation - solid conductor - flexible armor	J,K,T				
F3	Fiberglass insulation - solid conductor - stainless steel overbraid	J,K				
F4	Fiberglass insulation - Stranded conductor	J,K				
F5	Fiberglass insulation - Stranded conductor - flexible armor	J,K				
F6	Fiberglass insulation - Stranded conductor - stainless steel overbraid	J				
T2	Teflon insulation - solid conductor - flexible armor	J,K,T				
T3	Teflon insulation - Stranded conductor	J,K				
T4	Teflon insulation - Stranded conductor - flexible armor	J,K				
CODE	Lead Length "F" Dimension	Thermocouple Types				
XXX	XXX = Lead Length in inches					
CODE	Termination Options	Thermocouple Types				
01	None	J,K,T				
02	Leads stripped 2"	J,K,T				
03	Leads stripped 2" with spade lugs	J,K,T				
04	Leads stripped 2" with 1/2" NPT Bx connector	J,K,T				
05	Leads stripped 2" with spade lugs & 1/2" NPT Bx connector	J,K,T				
06	Standard thermocouple plug*	J,K,T				
07	Standard thermocouple jack*	J,K,T				
08	Standard thermocouple plug with mating connector*	J,K,T				
09	Standard thermocouple jack with mating connector*	J,K,T				
10	Miniature thermocouple plug*	J,K				
11	Miniature thermocouple jack*	J,K				
12	Miniature thermocouple plug with mating connector*	J,K				
13	Miniature thermocouple jack with mating connector*	J,K				
* Plugs and Jacks 500°F maximum temperature						
ADS-	S	J	F6	036	02	Typical PN: ADS-SJF6-03602

## Adjustable Depth Sensor

Typical PN: ADS-SJF6-03602

Pricing		Code	Adder
Step 1	Adjustment type	S	\$11.90

		Code	Adder
Step 2	Thermocouple Alloy	J	\$0.00

		Code	Adder
Step 3	Lead wire	F6	\$0.00

		Code	Adder
Step 4	Lead length	36	\$5.70

		Code	Adder
Step 5	Terminations	02	\$2.80

Adjustment Type	
Code	
S	\$11.90
C	\$11.90

Thermocouple Alloy	
Code	
J	\$0.00
K	\$0.90
T	\$0.90

Lead wire type	
Code	
F4	\$0.00
F6	\$0.00
T3	\$0.00

Lead length in inches	
Code	
XXX	Lead wire adder per foot from table, round up to even foot length

Examples:

36" of Type J, F6 lead wire = 3 x \$1.90 = \$5.70

Termination Options	
Code	
01	\$0.00
02	\$2.80
03	\$3.20
04	\$5.50
05	\$5.95
06	\$11.90
07	\$11.90
08	\$19.25
09	\$19.25
10	\$11.25
11	\$11.75
12	\$18.00
13	\$17.90

Lead-Wire Adder Per Foot			
	Type J	Type K	Type T
Code	Single	Single	Single
F2	\$2.95	\$3.30	\$2.70
F3	\$1.90	\$2.30	NA
F4	\$1.30	\$2.00	NA
F5	\$3.20	\$3.70	NA
F6	\$1.90	\$2.40	NA
T2	\$2.95	\$3.10	\$2.50
T3	\$1.40	\$2.00	NA
T4	\$3.20	\$3.70	NA

ADS-SJF6-03602	Total
	<u>\$20.40</u>

## Ring Type Thermocouples

RTT	Ring Type Thermocouple, Nickel plated			
CODE	Thermocouple Alloy	Min Temp F.	Max Temp F.	
J	Iron/Constantan	32	700	
K	Chromel/Alumel	32	1600	
T	Copper/Constantan	-328	400	
<hr/>				
<b>CODE    Lead Length "F" Dimension, Lead Wire is Fiberglass insulation - Stranded conductor - stainless steel overbraid</b>				
XXX	XXX = Lead Length in inches			
<hr/>				
<b>CODE</b>		<b>Hole Size</b>		
C	3/16"			
F	3/8"			
<hr/>				
<b>CODE</b>		<b>Termination Options</b>	<b>Thermocouple Types</b>	
01	None		J,K,T	
02	Leads stripped 2"		J,K,T	
03	Leads stripped 2" with spade lugs		J,K,T	
04	Leads stripped 2" with 1/2" NPT Bx connector		J,K,T	
05	Leads stripped 2" with spade lugs & 1/2" NPT Bx connector		J,K,T	
06	Standard thermocouple plug*		J,K,T	
07	Standard thermocouple jack*		J,K,T	
08	Standard thermocouple plug with mating connector*		J,K,T	
09	Standard thermocouple jack with mating connector*		J,K,T	
10	Miniature thermocouple plug*		J,K	
11	Miniature thermocouple jack*		J,K	
12	Miniature thermocouple plug with mating connector*		J,K	
13	Miniature thermocouple jack with mating connector*		J,K	
* Plugs and Jacks 500°F maximum temperature				
<hr/>				
RTT-	J	036	C	02    Typical PN: RTT-J036C02

## Ring Type Thermocouple

Typical PN: RTT-J036C02

Pricing		Code	Adder
Step 1	Ring Type	RTT	\$8.00

		Code	Adder
Step 2	Thermocouple Alloy	J	\$0.00

		Code	Adder
Step 3	Lead length	36	\$5.70

		Code	Adder
Step 4	Hole Size	C	\$0.00

		Code	Adder
Step 5	Terminations	2	\$2.80

RTT-J036C02		Total	\$16.50
-------------	--	-------	---------

Ring Type Thermocouple	
Code	
RTT	\$8.00

Thermocouple Alloy	
Code	
J	\$0.00
K	\$0.00
T	\$0.00

Lead length in inches	
Code	
XXX	Lead wire adder per foot from table, round up to even foot length

Examples:

36" of Type J lead wire = 3 x \$1.90 = \$5.70

Hole Size	
Code	
C	\$0.00
F	\$0.00

Termination Options	
Code	
01	\$0.00
02	\$2.80
03	\$3.30
04	\$5.50
05	\$6.10
06	\$11.90
07	\$11.90
08	\$19.25
09	\$19.25
10	\$11.25
11	\$11.80
12	\$18.00
13	\$18.00

Lead-Wire Adder Per Foot			
Code	Type J	Type K	Type T
	\$1.90	\$2.40	\$2.30

## Nozzle Type Thermocouples

NTT Nozzle Type Thermocouple						
	CODE	Thermocouple Alloy	Min Temp F.	Max Temp F.		
	J	Iron/Constantan	32	700		
	K	Chromel/Alumel	32	1600		
	T	Copper/Constantan	-328	400		
		<b>CODE      Lead Wire Type, 20 gauge stranded conductor</b>				<b>Thermocouple Types</b>
	F4	Fiberglass insulation - Stranded conductor				J,K
	F6	Fiberglass insulation - Stranded conductor - stainless steel overbraid				J,K,T
	T3	Teflon insulation - Stranded conductor				J,K,T
		<b>CODE      Lead Length "F" Dimension</b>				
	XXX	XXX = Lead Length in inches				
		<b>CODE      Bolt Type</b>				
	F	Fixed				
	R	Rotate Swivel				
		<b>CODE      Termination Options</b>				<b>Thermocouple Types</b>
	01	None				J,K,T
	02	Leads stripped 2"				J,K,T
	03	Leads stripped 2" with spade lugs				J,K,T
	04	Leads stripped 2" with 1/2" NPT Bx connector				J,K,T
	05	Leads stripped 2" with spade lugs & 1/2" NPT Bx connector				J,K,T
	06	Standard thermocouple plug*				J,K,T
	07	Standard thermocouple jack*				J,K,T
	08	Standard thermocouple plug with mating connector*				J,K,T
	09	Standard thermocouple jack with mating connector*				J,K,T
	10	Miniature thermocouple plug*				,K
	11	Miniature thermocouple jack*				J,K
	12	Miniature thermocouple plug with mating connector*				J,K
	13	Miniature thermocouple jack with mating connector*				J,K
		* Plugs and Jacks 500°F maximum temperature				
NTT-	J	F6	036	R	02	Typical PN: NTT-JF6036R02

## Nozzle Type Thermocouple

Typical PN: NNT-JF6036R02

Pricing		Code	Adder
Step 1	Nozzle Type	NTT	\$22.40

		Code	Adder
Step 2	Thermocouple Alloy	J	\$0.00

		Code	Adder
Step 3	Lead wire	F6	\$0.00

		Code	Adder
Step 4	Lead length	36	\$5.70

		Code	Adder
Step 5	Bolt Type	R	\$0.00

		Code	Adder
Step 6	Terminations	02	\$2.80

Nozzle Type	
Code	
NTT-	\$22.40

Thermocouple Alloy	
Code	
J	\$0.00
K	\$0.00
T	\$0.00

Lead wire type	
Code	
F4	\$0.00
F6	\$0.00
T3	\$0.00

Lead length in inches	
Code	
XXX	Lead wire adder per foot from table, round up to even foot length

Examples:

36" of Type J, F6 lead wire = 3 x \$1.90 = \$5.70

Lead-Wire Adder Per Foot			
Code	Type J	Type K	Type T
F4	\$1.30	\$2.00	NA
F6	\$1.90	\$2.40	\$2.30
T3	\$1.40	\$2.00	\$4.35

Bolt Type	
Code	
F	\$0.00
R	\$0.00

Termination Options	
Code	
01	\$0.00
02	\$2.80
03	\$3.30
04	\$5.50
05	\$6.10
06	\$11.90
07	\$11.90
08	\$19.25
09	\$19.25
10	\$11.25
11	\$11.80
12	\$18.00
13	\$18.00

NNT-JF6036R02	Total
	<u>\$30.90</u>

### Surface Plate Thermocouples

SPT Surface Plate Thermocouple						
CODE	Thermocouple Alloy	Min Temp F.	Max Temp F.			
J	Iron/Constantan	32	700			
K	Chromel/Alumel	32	1600			
T	Copper/Constantan	-328	400			
CODE	Lead Wire Type, 20 gauge stranded conductor			Thermocouple Types		
F4	Fiberglass insulation - Stranded conductor			J,K		
F6	Fiberglass insulation - Stranded conductor - stainless steel overbraid			J,K,T		
T3	Teflon insulation - Stranded conductor			J,K,T		
CODE	Lead Length "F" Dimension					
XXX	XXX = Lead Length in inches					
CODE	Plate Size					
A	1"-x-1"					
B	3/4"-x-1"					
CODE	Termination Options	Thermocouple Types				
01	None	J,K,T				
02	Leads stripped 2"	J,K,T				
03	Leads stripped 2" with spade lugs	J,K,T				
04	Leads stripped 2" with 1/2" NPT Bx connector	J,K,T				
05	Leads stripped 2" with spade lugs & 1/2" NPT Bx connector	J,K,T				
06	Standard thermocouple plug*	J,K,T				
07	Standard thermocouple jack*	J,K,T				
08	Standard thermocouple plug with mating connector*	J,K,T				
09	Standard thermocouple jack with mating connector*	J,K,T				
10	Miniature thermocouple plug*	J,K				
11	Miniature thermocouple jack*	J,K				
12	Miniature thermocouple plug with mating connector*	J,K				
13	Miniature thermocouple jack with mating connector*	J,K				
* Plugs and Jacks 500°F maximum temperature						
SPT-	J	F6	036	A	02	Typical PN: SPT-JF6036A02

## Surface Plate Thermocouple

Typical PN: SPT-JF6036R02

Pricing		Code	Adder
Step 1	Surface Plate Thermocouple	SPT	\$20.15

Surface Plate Thermocouple	
Code	
SPT-	\$20.15

		Code	Adder
Step 2	Thermocouple Alloy	J	\$0.00

Thermocouple Alloy	
Code	
J	\$0.00
K	\$0.00
T	\$0.00

		Code	Adder
Step 3	Lead wire	F6	\$0.00

Lead wire type	
Code	
F4	\$0.00
F6	\$0.00
T3	\$0.00

		Code	Adder
Step 4	Lead length	036	\$5.70

Lead length in inches	
Code	
XXX	Lead wire adder per foot from table, round up to even foot length

Lead-Wire Adder Per Foot			
Code	Type J	Type K	Type T
F4	\$1.30	\$2.00	NA
F6	\$1.90	\$2.40	\$2.30
T3	\$1.40	\$2.00	\$4.35

Examples:

36" of Type J, F6 lead wire = 3 x \$1.90 = \$5.70

		Code	Adder
Step 5	Plate Size	A	\$0.00

Plate Size	
Code	
A	\$0.00
B	\$0.00

		Code	Adder
Step 6	Termination Option	2	\$2.80

Termination Options	
Code	
01	\$0.00
02	\$2.80
03	\$3.30
04	\$5.50
05	\$6.10
06	\$11.90
07	\$11.90
08	\$19.25
09	\$19.25
10	\$11.25
11	\$11.80
12	\$18.00
13	\$18.00

SPT-JF6036R02	Total
	<u>\$28.65</u>

# Built-Up Thermowell

Thermowells for 1/4" diameter Probes (4" to 26" length)

<b>BUTW</b>				<b>Built Up Thermowell with 0.50" O.D. and 0.26" I.D.</b>	
<b>CODE</b>	<b>Bushing Threads</b>				
A	1/2 NPT Outside 1/2 NPT Inside				
<b>CODE</b>	<b>"B" Dimension</b>				
XXX	XXX = length in Inches				
<b>CODE</b>	<b>Fraction of an inch</b>				
A	None				
B	1/4"				
C	1/2"				
E	3/4"				
BUTW-	A	012	A	Typical PN: BUTW-A012A	

## Built Up Thermowell

### Thermowells for 1/4" diameter Probes (4" to 26" length)

Typical PN: BUTW-A012A

Pricing		Code	Adder
Step 1	Built Up Thermowell	BUTW	\$0.00

		Code	Adder
Step 2	Bushing Thread	A	\$0.00

		Code	Adder
Step 3	Length Dimension	012	\$143.60

		Code	Adder
Step 4	Fractional length	A	\$0.00

Built Up Thermowell	
Code	
BUTW-	\$0.00

Bushing Threads	
Code	
A	\$0.00

Length dimension in inches ("B" Dimension)		
Code	4" to 14"	14" to 26"
XXX	\$143.60	\$186.00

Fractional Probe length		
Code		
A	\$0.00	
B	\$0.00	
C	\$0.00	
D	\$0.00	

BUTW-A012A	Total
	<u>\$143.60</u>

# Thermocouple Wire

TCW Thermocouple Wire						
CODE		Wire Gauge				
20						
24						
CODE		Thermocouple Alloy				
J		Iron/Constantan				
K		Chromel/Alumel				
CODE		Insulation				
F		Fiberglass insulation				
B		Fiberglass insulation - stainless steel overbraid				
T		Teflon insulation				
CODE		Conductor				
S		Solid				
T		Stranded				
CODE		Length				
XXX		XXX = length in feet				
TCW-	20	J	F	S-	100	Typical PN: TCW-20JFS-100

Note: Up to 1,000' rolls

## Thermocouple Wire

Typical PN: TCW-20JFS-100

Pricing		Code	Adder
Step 1	Thermocouple Wire	TCW	\$11.25

		Code	Adder
Step 2	Wire Gauge	20	\$0.00

		Code	Adder
Step 3	Thermocouple Alloy	J	\$0.00

		Code	Adder
Step 4	Insulation Type	F	\$0.00

		Code	Adder
Step 5	Conductor Type	S	\$0.00

		Code	Adder
Step 6	Lead Length	100	\$120.00

TCW-20JFS-100	Total	<u>\$131.25</u>
---------------	-------	-----------------

Thermocouple Wire	
Code	
TCW-	\$11.25

Wire gauge	
Code	
20	\$0.00
24	\$0.00

Thermocouple Alloy	
Code	
J	\$0.00
K	\$0.00

Insulation Type	
Code	
F	\$0.00
B	\$0.00
T	\$0.00

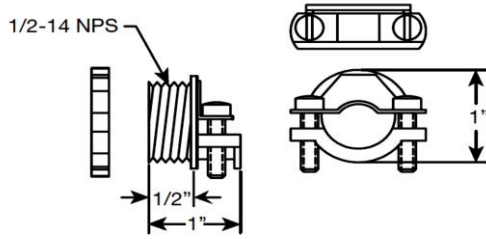
Conductor Type	
Code	
S	\$0.00
T	\$0.00

Lead length in feet	
Code	
XXX	Lead wire adder per foot from table, round up to even foot length

Examples:  
 100 FEET of 20JFS lead wire = 100 x \$1.20 = \$120.00

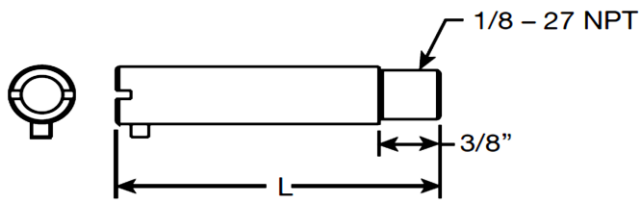
Leadwire price per foot ("F" dimension)			
20 Gauge	Price/Ft	24 Gauge	Price/Ft
20JFS	\$1.20	24JFS	\$1.10
20JFT	\$1.30	24JFT	\$1.20
20JTS	\$1.30	24JTS	\$1.20
20JTT	\$1.40	24JTT	\$1.30
20JBS	\$1.90	24JBS	\$1.70
20JBT	\$2.00	24JTS	\$1.90
20KFS	\$1.70	24KFS	\$1.60
20KFT	\$1.90	24KFT	\$1.70
20KTS	\$1.90	24KTS	\$1.70
20KTT	\$2.00	24KTT	\$1.90
20KBS	\$2.50	24KBS	\$2.40
20KBT	\$2.60	24KTS	\$2.50

## Accessories



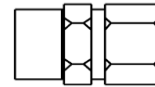
**BX Connector 1/2" NPT**

Part Number	Material	Price
PC4387-1	Galv. Steel	1.00



**Quick Detach Adapters**

Part Number	"L" Dimension	Material	Price
TC6136-8	7/8"	Stn Stl	1.65
TC6136-12	1-1/4"	Plated Steel	2.70
TC6136-15	1-1/2"	Plated Steel	2.80
TC6136-20	2"	Plated Steel	3.00
TC6136-25	2-1/2"	Plated Steel	8.50
TC6136-32	3-1/4"	Plated Steel	9.55
TC6136-40	4"	Plated Steel	10.30



**Compression Fittings**

Supplied With Metal Ferrules Only				
Part Number	T/C Size	Thread Size	Material	Price
PC4381-1	3/16"	1/8 NPT	Brass	8.50
PC4381-2	1/8"	1/8 NPT	Brass	8.00
PC4381-6	3/16"	1/4 NPT	Brass	10.05
PC4381-8	1/8"	1/8 NPT	Stn Stl	12.90
PC4381-9	1/8"	1/4 NPT	Stn Stl	12.90
PC4381-10	3/16"	1/8 NPT	Stn Stl	12.90
PC4381-11	3/16"	1/4 NPT	Stn Stl	12.90
PC4381-12	1/4"	1/8 NPT	Stn Stl	12.90
PC4381-13	1/4"	1/4 NPT	Stn Stl	12.90