

# POWERLINK SALES MENUS

Tempco Electric Heater Corporation

Heating Elements • Controls • Sensors



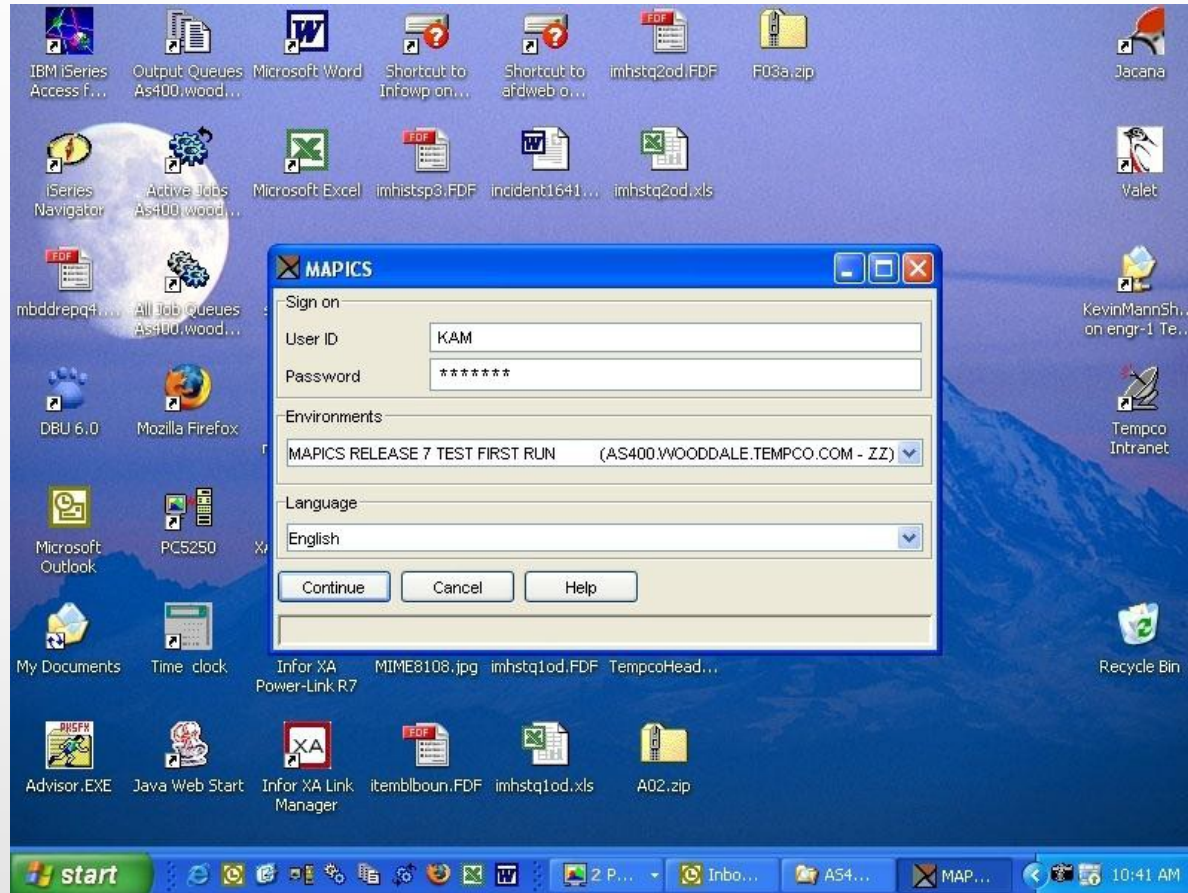
# Quick History

- Pre 1998 - Mapics II
- 1998 - Mapics XA rel 3
- 2006 - Mapics XA rel 7
  - name change to Infor XA
  - current name = **Infor10 ERP Discrete iEnterprise**
  - introduced windows version (with rel 6) called Browser
  - Browser renamed PowerLink
  - Current name = Infor Development Framework
- 2012 - We are upgrading to rel 9

# Quick History (cont.)

- Release 9 is the first release where all green screen options could be done in the Windows version.
- Release 9 is the last release that the green screen and Windows version will work in sync.
- Release 10 (due out in fall of 2012) will obsolete green screens.
- Starting with release 9 we will use Infor products, Integrator and SystemLink to make modifications and move data between our Mapics and PC systems. Future upgrades can take place in days instead of months and years.

# Sign on Screen



Heating Elements • Controls • Sensors

**TEMPCO**

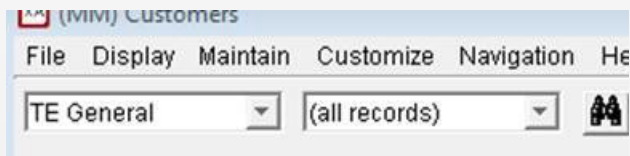
# Opening Screen



Heating Elements • Controls • Sensors

# Customer Master

Cust#	Addressee name	Sts	Class	Territory	Salesrep	City	State	Postal code	Contact	Telephone	Fax
221	ACE RUBBER PRODUCTS	S	11 = USER "B"	3 = FRANK HROUDA	31000	KENNEDALE	TX	76060			
1900	A-1 COMPONENTS, CORP.	S	13 = RESALE	2 = CHUCK SOSTAK	13000	HIALEAH	FL	33010	RAYSA ALVAREZ	305-885-1911	1305-884-20
2100	A-1 AUTOMOTIVE MACHINE SHOP	S	11 = USER "B"	1 = DEBBIE WILES	41000	GREENSBURG	PA	15601	JOE	724-834-4113	1724-834-00
2200	A-1 Engineering	A	15 = OEM	22 = JOEL FEDER	38000	Coon Rapids	MN	55433	Jo Tollefson	763-786-8710	1763-786-70
2700	A-1 IMPORT & EXPORT SUITE 100	S	13 = RESALE	2 = CHUCK SOSTAK	13000	OUT OF BUSINESS	FL	33173	BELKYS	305-274-3694	
3500	AAI ACCOUNTS PAYABLE	S	11 = USER "B"	13 = JOHN DRUFKE	52000	HUNT VALLEY	MD	21030	RON BROWN	410-628-3791	1410-628-30
4000	Matt Kennedy	S	SR = Sales Rep	(blank)	4000	Anaheim	CA	92801			
8600	DELETED	S	(blank)	6 = MIKE MALLON	3000						
9400	AAI INC.	S	15 = OEM	13 = JOHN DRUFKE	52000	HUNT VALLEY	ME	21030	GARY BECKER	410-628-3670	1410-667-71
10500	A123 Systems	A	11 = USER "B"	1 = DEBBIE WILES	44000	Waltham	MA	02451	Khalid Sheikh	734-772-0816	
10600	A1 International Tech Corp	A	13 = RESALE	2 = CHUCK SOSTAK	13000	Miami	FL	33187	Claudia Estabridis	786-210-8796	305-253-087
10700	A1 Tool Corporation	A	15 = OEM	6 = MIKE MALLON	3000	Melrose Park	IL	40160	Brian Scales	708-345-5000	1708-345-20



- Top left corner of most screens show these 2 dropdown boxes.
- The first box (TE General here) is the view. This is what columns of information will be displayed.
- The 2<sup>nd</sup> box is the subset box. This box is used for filtering

# Tempco Sales II

(MM) Customer Orders and Quotes

File Display Maintain Customize Navigation Help

C.O./S.O. Order (all records)

Customer Orders and Quotes

Order Type	Order	Sts	Customer	Addressee name	Auto Hold	Order date	Cust P.O.	SA2 Quote#	Request	Mfg due	Total open items amt	Sales Rep	Ter	Class	Shipping Instructions
1	466930	10	16946300	GRELLER AND COMPANY	No	06/30/2010	11154	WG61219	09/30/2010	09/30/2010	5,292.00	41000	1	15	
1	483238	10	30468900	Fountain Industries	No	02/03/2011	59069	WG82837	03/01/2011	03/01/2011	0.00	24000	3	15	
1	459164	10	10480900	CROWN MACHINE INC	No	03/16/2010	003546	WG48360	05/09/2011	05/09/2011	6,568.20	31000	3	15	
1	488111	10	27012300	Plastic Service & Products	No	03/31/2011	SP000944	WG82542	05/27/2011	05/27/2011	6,037.50	27000	19	11	PREPAY AND ADD FREIGHT CH..
1	493363	10	17327400	Fluke Electronics Corporation	No	06/09/2011	397731-389	WG95745	07/26/2011	07/26/2011	489.80	27000	19	15	DONT SHIP EARLY
1	493987	10	17327400	Fluke Electronics Corporation	No	06/16/2011	397731 355	WG98592	07/27/2011	07/27/2011	1,041.25	27000	19	15	DONT SHIP EARLY
1	492251	10	20310500	KOM Automation	No	05/24/2011	0157710	WG93909	08/16/2011	08/16/2011	15,600.00	1000	14	19	
1	482440	10	18321200	IdaTech, LLC	No	01/25/2011	102926	WG81745	09/20/2011	09/20/2011	5,952.70	39000	12	15	
1	499911	10	34813600	TNT Cable Industries	No	09/02/2011	18417	WH04185	01/23/2012	01/23/2012	2,070.00	4000	7	15	
1	505676	10	17396600	Hearth & Home Technologies	No	11/15/2011	199863	WH11614	02/24/2012	02/24/2012	9,075.00	52000	13	15	
1	505761	10	17396600	Hearth & Home Technologies	No	11/16/2011	199863	WH11619	02/24/2012	02/24/2012	131,325.00	52000	13	15	
1	492692	10	38699200	Xaact Products	Yes	05/31/2011	0000753	WG89939	03/01/2012	03/01/2012	7,407.60	39000	12	15	CIA
1	514077	10	11962900	Double D Supply	No	03/02/2012	2012-HR107	WH21936	03/02/2012	03/02/2012	8,398.00	76000	11	13	
1	510139	10	17248500	Halliburton Energy Services	No	01/17/2012	4508877725	WH17110	03/06/2012	03/06/2012	6,274.45	31000	3	15	SEE CW B4 SHIPS
1	507934	10	22490400	LYMAN PRODUCTS	No	12/14/2011	61409	WH14223	04/02/2012	04/02/2012	7,410.00	37000	10	15	
1	490576	10	24170100	Monogram Systems	No	05/03/2011	2131040	YH03051	04/03/2012	04/03/2012	3,572.00	25000	15	15	
1	514285	10	16413700	GOKOH CORP.	No	03/06/2012	67134	WH22367	04/05/2012	04/05/2012	1,880.00	41000	1	15	
1	511891	10	15177500	Freeman Schwabe	No	02/07/2012	P000027529	WH18275	04/11/2012	04/11/2012	8,895.00	41000	1	15	CIACALL FOR SHIP INSTRUCT..
1	516454	10	11016200	Davco Technology LLC	No	03/29/2012	S10085	WH25064	04/26/2012	04/26/2012	6,042.60	1000	1	15	CCXTRUCK ONLY
1	516455	10	11016200	Davco Technology LLC	No	03/29/2012	S10085	WH25064	04/26/2012	04/26/2012	15,349.50	1000	1	15	CCXTRUCK ONLY
1	516471	10	11016200	Davco Technology LLC	No	03/29/2012	S10085	WH24171	04/26/2012	04/26/2012	789.25	1000	1	15	CCXTRUCK ONLY
1	516527	10	21066800	Kydex	No	03/30/2012	59505	WH24550	04/26/2012	04/26/2012	772.35	52000	13	11	
1	517611	10	5851800	Boston Scientific	Yes	04/13/2012	6333313	WH10398	05/07/2012	05/07/2012	1,831.50	38000	22	11	DONT OVERSHIP

(MM) Line Items - 1 Customer: 24170100 Monogram Systems

File Display Maintain Customize Navigation Help

Tempco Sales W... (all records)

1 Customer: 24170100 Monogram Systems Order: CO 490573

Item	Item description	Ord Qty	Opn Qty	UM	Promise
SHS01651	10W 120V	100	24	EA	

(MM) Releases - 1 Order: CO 490573 Item: SHS01651

File Display Maintain Customize Navigation Help

TE General (all records)

1 Order: CO 490573 Item: SHS01651 10W 120V

Rel Seq	Item	Request	Rel Sts	Ordered	UM	Rema
1	SHS01651	10/24/2011	50	25	EA	
2	SHS01651	11/22/2011	50	25	EA	
3	SHS01651	06/09/2012	50	25	EA	
4	SHS01651	07/09/2012	20	25	EA	

(MM) Shipped Items - 1 Customer: 24170100 Monogram Systems Order: CO 490573

File Display Maintain Customize Navigation Help

Sales Tempco (all records)

1 Customer: 24170100 Monogram Systems Order: CO 490573

Item	Item description	Cus Name	P.O. number	Ord Sts	Pro bill number
SHS01651	10W 120V	Monogram Systems	2131040	10 = Ente...	1261041103764
SHS01651	10W 120V	Monogram Systems	2131040	10 = Ente...	1261041103764
SHS01651	10W 120V	Monogram Systems	2131040	10 = Ente...	1261041103764
SHS01651	10W 120V	Monogram Systems	2131040	10 = Ente...	1261041103764
SHS01651	10W 120V	Monogram Systems	2131040	10 = Ente...	1261041103764
SHS01651	10W 120V	Monogram Systems	2131040	10 = Ente...	1261041103757
SHS01651	10W 120V	Monogram Systems	2131040	10 = Ente...	1261041103757
SHS01651	10W 120V	Monogram Systems	2131040	10 = Ente...	1261041103740
SHS01651	10W 120V	Monogram Systems	2131040	10 = Ente...	1261041103740

Heating Elements • Controls • Sensors



# Tempco Sales II (cont.)

- Tempco Sales 2
- Top window = Open customer orders
- Highlight order to bring up line Items and shipped items in bottom windows.
- Highlight Line item to show open releases in middle bottom panel.

# Shipped History for an Item

- Select item using Item starts with. Then double click. This will show order shipments for an item within a given date range (1-year default)

(MM) Shipped Items

File Display Maintain Customize Navigation Help

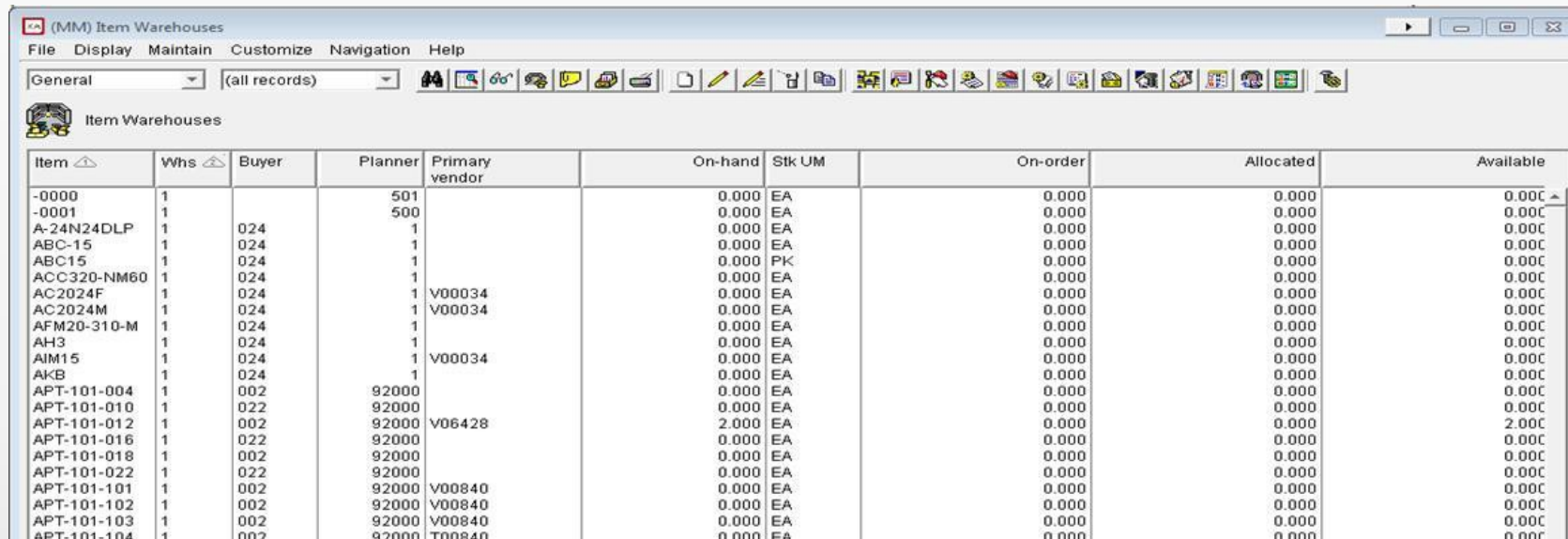
Sales Tempco \*Item# Since

Shipped Items

Item	Item description	Cus Name	P.O. number	Order	Ord Sts	Pro bill number	Packing list	Ship Date	Carrier	Shipped	U M	Rel	Invoice	Invoice	Net sales	Customer	Ter
HDC00001	HD04-0100N 50W 1...	Car-May	2006-JDB1122	508657	50 = Com...	1261041102750858...	406,819	12/22/2011	UPSFR...	6.0	EA	1	641036	641036	176.10	7069400	03
HDC00001	HD04-0100N 50W 1...	TEMPCO MEXICO S.A. DE...	7693-11 C11...	504477	50 = Com...		401,761	11/03/2011	UPSFR...	6.0	EA	1	635949	635949	65.16	35415500	05
HDC00002	HD04-0100N 80W 1...	WW Grainger Industrial Su...	VARIOUS	15004	50 = Com...		0	05/23/2012	CR	0.0	EA	1	14668	14668	-222.60	16776900	06
HDC00003	HD04-0100N 100W ...	WW Grainger Industrial Su...	VARIOUS	14922	50 = Com...		0	05/16/2012	CR	0.0	EA	1	14584	14584	-232.40	16776900	06
HDC00003	HD04-0100N 100W ...	Ohmite Manufacturing	PO33254-00	503900	50 = Com...	104597330003115	400,869	10/25/2011	FEDXGR...	2.0	EA	1	635166	635166	58.70	26750500	03
HDC00004	HD04-0100N 100W ...	WW Grainger Industrial Su...	VARIOUS	14926	50 = Com...		0	05/16/2012	CR	0.0	EA	1	14588	14588	-166.00	16776900	06
HDC00004	HD04-0100N 100W ...	Fluid Research Corporation	50958	516679	50 = Com...	1261041103758658...	416,775	04/03/2012	UPSFR...	2.0	EA	1	651760	651200	41.10	14719200	07
HDC00004	HD04-0100N 100W ...	Fluid Research Corporation	50394	502409	50 = Com...	1261041103740344...	398,915	10/05/2011	UPSFR...	2.0	EA	1	634661	633150	41.10	14719200	07
HDC00004	HD04-0100N 100W ...	WW Grainger Industrial Su...	4606661336	501750	50 = Com...		398,497	09/29/2011	UPSFR...	20.0	EA	1	633528	632765	159.00	16776900	06
HDC00004	HD04-0100N 100W ...	Arizona Instruments LLC	006364	496059	50 = Com...	8755 7213 0167	390,984	07/14/2011	FED X 2...	2.0	EA	1	625180	625180	58.70	3076500	03
HDC00005	HD04-0100N 150W ...	Noren Products	216186	506996	50 = Com...	1261041103753637...	404,700	12/02/2011	UPSFR...	20.0	EA	1	639052	639052	411.00	25923300	04
HDC00005	HD04-0100N 150W ...	Noren Products	202786	502863	50 = Com...	1261041103760652...	399,625	10/12/2011	UPSFR...	5.0	EA	1	633831	633831	102.75	25923300	04
HDC00005	HD04-0100N 150W ...	Avago Technologies	VERBAL CINDI	502538	50 = Com...	1261041103741121...	399,202	10/07/2011	UPS	3.0	EA	1	633408	633408	88.05	27131800	03
HDC00005	HD04-0100N 150W ...	California Institute of Techn...	7G-S125940	501810	50 = Com...	1261041103741965...	398,377	09/28/2011	UPS	18.0	EA	1	632590	632590	502.20	7079400	04
HDC00005	HD04-0100N 150W ...	California Institute of Techn...	7G-S120431	495940	50 = Com...	1261041103756099...	390,928	07/14/2011	UPS	12.0	EA	1	625187	625187	352.20	7079500	04

# Item Warehouses (Balance)

- Select item using Item starts with. Highlight and double click.



The screenshot shows the SAP MM Item Warehouses window. The window title is "(MM) Item Warehouses". The menu bar includes File, Display, Maintain, Customize, Navigation, and Help. The toolbar contains various icons for navigation and editing. The main area displays a table with the following columns: Item, Whs, Buyer, Planner, Primary vendor, On-hand, Stk UM, On-order, Allocated, and Available. The table contains 20 rows of data, including items like -0000, -0001, A-24N24DLP, ABC-15, ABC15, ACC320-NM60, AC2024F, AC2024M, AFM20-310-M, AH3, AIM15, AKB, APT-101-004, APT-101-010, APT-101-012, APT-101-016, APT-101-018, APT-101-022, APT-101-101, APT-101-102, APT-101-103, and APT-101-104. The On-hand, On-order, Allocated, and Available columns show numerical values, while the Stk UM column shows units like EA, PK, and FA.

Item	Whs	Buyer	Planner	Primary vendor	On-hand	Stk UM	On-order	Allocated	Available
-0000	1		501		0.000	EA	0.000	0.000	0.000
-0001	1		500		0.000	EA	0.000	0.000	0.000
A-24N24DLP	1	024	1		0.000	EA	0.000	0.000	0.000
ABC-15	1	024	1		0.000	EA	0.000	0.000	0.000
ABC15	1	024	1		0.000	PK	0.000	0.000	0.000
ACC320-NM60	1	024	1		0.000	EA	0.000	0.000	0.000
AC2024F	1	024	1	V00034	0.000	EA	0.000	0.000	0.000
AC2024M	1	024	1	V00034	0.000	EA	0.000	0.000	0.000
AFM20-310-M	1	024	1		0.000	EA	0.000	0.000	0.000
AH3	1	024	1		0.000	EA	0.000	0.000	0.000
AIM15	1	024	1	V00034	0.000	EA	0.000	0.000	0.000
AKB	1	024	1		0.000	EA	0.000	0.000	0.000
APT-101-004	1	002	92000		0.000	EA	0.000	0.000	0.000
APT-101-010	1	022	92000		0.000	EA	0.000	0.000	0.000
APT-101-012	1	002	92000	V06428	2.000	EA	0.000	0.000	2.000
APT-101-016	1	022	92000		0.000	EA	0.000	0.000	0.000
APT-101-018	1	002	92000		0.000	EA	0.000	0.000	0.000
APT-101-022	1	022	92000		0.000	EA	0.000	0.000	0.000
APT-101-101	1	002	92000	V00840	0.000	EA	0.000	0.000	0.000
APT-101-102	1	002	92000	V00840	0.000	EA	0.000	0.000	0.000
APT-101-103	1	002	92000	V00840	0.000	EA	0.000	0.000	0.000
APT-101-104	1	002	92000	T00840	0.000	FA	0.000	0.000	0.000

# Item Warehouses (Balance) (cont.)

(MM) Item Warehouse - 1, HDC20090

File Display Maintain Customize Navigation Help

Default

HDC20090 Hdr10-0808fm2dipas 2000w 240v 1 Warehouse 1 Plant 1

**Availability**

Description: Hdr10-0808fm2dipas 2000w 240v  
 Extended description 1: (blank)  
 Extended description 2: (blank)  
 Planner: 500

Quantity on-hand: 35,000  
 Quantity on-order (purchase): 0,000  
 Quantity on-order (production): 155,000  
 Total quantity available: 3,000

**Open MOs**

Order	Status	Order UM	Due	Cus Ord#	Dept
MC74820	40 = Star...	50,000 EA	06/26/2012	517393	HD
MC83850	40 = Star...	50,000 EA	07/03/2012	517393	HD
MC92590	10 = Rel...	55,000 EA	07/11/2012	517393	HD

155,000

**Transaction history**

Posted	Txn	Quantity	UM	New On-hand
06/26/2012	SA	53,000	EA	35,000
06/19/2012	RM	0,000	EA	88,000
06/19/2012	RM	53,000	EA	88,000
06/08/2012	SA	20,000	EA	35,000
06/08/2012	RW	20,000	EA	55,000
06/08/2012	IW	20,000	EA	55,000
06/08/2012	TW	20,000	EA	55,000
06/01/2012	RW	53,000	EA	55,000
06/01/2012	IW	53,000	EA	55,000
06/01/2012	TW	53,000	EA	55,000
06/01/2012	RM	0,000	EA	55,000
06/01/2012	RM	53,000	EA	55,000
05/22/2012	SA	10,000	EA	2,000
05/22/2012	SA	96,000	EA	12,000
05/22/2012	RM	0,000	EA	108,000
05/22/2012	RM	53,000	EA	108,000
05/17/2012	RM	0,000	EA	55,000
05/17/2012	RM	53,000	EA	55,000
05/10/2012	SA	4,000	EA	2,000
05/10/2012	SA	100,000	EA	6,000

**Customer Orders**

Item/Request	Name	Order	Quantity	Backorder	Net sales a...	Order date	Item
07/27/2012	Avenics Corp.	523345	200,000	0,000	7,740,000	06/25/2012	HDC20090
07/23/2012	Avenics Corp.	517393	450,000	187,000	7,236,900	04/12/2012	HDC20090

650,000 187,000

Continue Help

Heating Elements • Controls • Sensors



# Item Warehouses (Balance) (cont.)

- You should be directed to the Item Warehouse MO CC tab which brings up four windows;
- Top Left = Availability
- Top Right = Open MOs
- Bottom Left = Transaction history
- Bottom Right = Customer orders.

# Thank You

Contact Kevin Mann with any questions

Ext. 3236

[kevinmann@tempco.Com](mailto:kevinmann@tempco.com)

Heating Elements • Controls • Sensors

**TEMPCO**