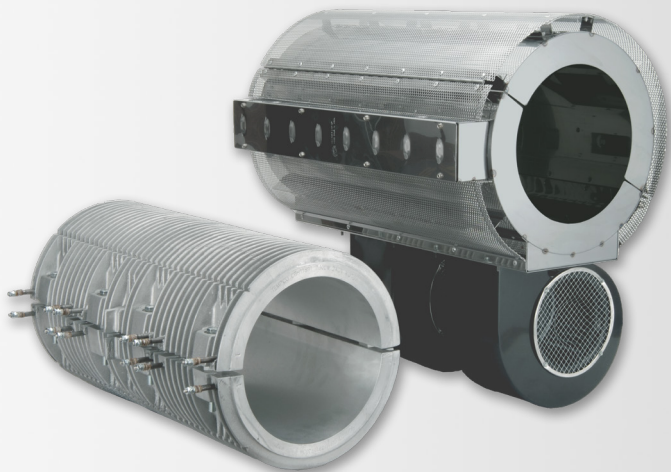


TEMPCO AIR-COOLED SHROUD SYSTEMS

Tempco's Air-Cooled Shroud Systems are highly engineered heating and cooling systems that offer an efficient means to heat and cool the barrels of extruders. These systems are self-contained and can be supplied as turnkey ready-to-go, requiring minimum labor and installation cost, and drastically reducing downtime and maintenance upkeep compared to conventional liquid cooling and heating cast-in band heaters.



Featuring:

-  Durable Construction
-  Easy Installation
-  Highly Efficient Design
-  Trouble-Free Operating Performance
-  Blowers & Blower Extensions & *more...*

TYPICAL APPLICATIONS

- Heating/cooling of extruder barrels
- Injection molding shrouds

See back for more details

Heating Elements • Controls • Sensors

TEMPCO
WWW.TEMPCO.COM | 800.323.6859



AIR-COOLED SHROUD SYSTEMS

Extreme value from the company that does it best!



1. COOL TO THE TOUCH

Barrel Diameter Range		Zone Length Range	
Min.	Max.	Min.	Max.
3"	23"	5"	42"
76mm	584mm	127mm	1067mm
Recommended Heater Types			
Tempco Finned Cast Aluminum Heaters, Vented Ceramic Band or Maxiband Heaters			

Dual Layer Shroud

- **Inner Stainless Steel Solid Layer**
 - Radiation shield that directs the cooling air flow over the heater and holds in heat to reduce energy use
- **Outer Stainless Steel Perforated Layer**
 - Isolates hot surfaces from contact (cool touch) for operator safety

Tempco's **Cool to the Touch** extruder heat/cool systems are custom engineered to provide optimal heating and cooling while providing personnel safety with a cool touch perforated outer layer. These systems are designed with finned cast-in heaters that optimize overall system efficiency.



2. MULTI-VERSAL

Barrel Diameter Range		Zone Length Range	
Min.	Max.	Min.	Max.
3"	23"	3-3/4"	42"
76mm	584mm	95mm	1067mm
Recommended Heater Types			
Tempco Finned Cast Aluminum Heaters, Vented Ceramic Band or Maxiband Heaters			

Single Layer Shroud

- **Solid Stainless Steel Layer**
 - Radiation shield that directs the cooling air flow over the heater and holds in heat to reduce energy use

Tempco's Multi-Versal extruder heat/cool systems are designed for efficient heating and cooling. A highly adaptable single layer shroud, they are suited for retrofit and/or new applications regardless of the type of barrel band heater being used. These shroud systems can be used with many styles of band heaters. Due to the single layer design, the Multi-Versal shroud system has a low profile OD.



3. ARCTIC CAST

Barrel Diameter Range		Zone Length Range	
Min.	Max.	Min.	Max.
4"	16"	6-1/2"	30-1/2"
102mm	406mm	165mm	775mm
Recommended Heater Types			
Tempco Finned Cast Aluminum Heaters			

Single Layer Shroud

- **Vented 1/4" thick Cast Aluminum layer**
 - Directs the cooling air flow over the heater

This rugged shroud design is recommended for installations where the shroud system could be exposed to physical damage, such as instances where the extruder barrel is low to the ground. It is suited to work with Tempco's specially designed finned cast-in aluminum heaters and cannot be used on any existing finned cast-in heaters.

D303

Additional Blowers & Blower Extensions Available

CONTACT US TO ORDER TODAY!

WWW.TEMPCO.COM | 800.323.6859

TEMPCO ELECTRIC HEATER CORPORATION
607 N. Central Avenue
Wood Dale, IL 60191-1452 USA